



JOTHI GROUP

Making Commitments Work



DiSA
shaping industry



Jothi Group

Jothi group is a foundry and machining group with over 50 years of experience in the production of Ductile and Grey iron castings, specialising in safety critical castings with unmatched quality, precision and expertise. Being a renowned casting manufacturer in the Automotive, Pumps, Valves, Railways, Defence, and Tractor segments, Jothi Group boasts a production capacity of 36,000 TPA.

Vision: "To emerge as the unparalleled global leader in the Ferrous Casting industry and remain the ultimate choice of customers."

JOTHI GROUP MAJOR MILESTONES

2011

Upgradation - Disamatic Vertical Line (DISA C3) 16000 TPA installed in Unit I

2024

Sustainability Initiative - Capitalized and Installed Solar Power for 12MW

2004

Improvement - Emission control equipment from DISA with a max emission level of 20mg/Nm³

2023

Expansion - Installed DISA ARPA 900 Line-II 4000 TPA in Unit II

2003

Improvement & Expansion - DISA - Sand Plant & DISA MATCH 130 moulding machine 8000 TPA installed in Unit I

2022

Improvement - Cold Box cores Introduced

1995

Incorporation - Subsidiary Jothi Agro Components Private Limited (Machining Division)

2020

Improvement - Process driven fettling line to reduce process time to 16 hours

1984

Incorporation - Subsidiary Jothi Micro Cast Private Limited (Unit II)

2018

Upgradation - DISA ARPA 900 Line-I, installed in Unit II | 8000 TPA

1973

Incorporation - Parent Company Jothi Malleables Private Limited (Unit I)

2015

Improvement - MAGMA Simulation Software introduced

Certifications



**AD-2000
MERKBLATT**



**DISAMATIC C3 – Fully Automatic VERTICAL
Flaskless High-Pressure Moulding**

Mould Size
650mm x 535mm x 120/340 mm

Moulding Speed
250 Moulds / Hour

Weight Range
0.2 to 30 Kgs

Capacity
16000 MT / Annum

Grade
Ductile Iron / Grey Iron



**DISAMATCH 130 – Fully Automatic HORIZONTAL
Flaskless High-Pressure Moulding**

Mould Size
508mm x 610mm x 300/400mm

Moulding Speed
160 Moulds / Hour

Weight Range
0.2 to 50 Kgs

Capacity
8000 MT / Annum

Grade
Ductile Iron / Grey Iron



**Arpa 900 – Jolt and Squeeze
Moulding with Flask 2 Lines**

Mould Size
970mm x 740mm x 600mm

Moulding Speed
40 Moulds / Hour

Weight Range
20 to 200 Kg

Capacity
12000 MT / Annum

Grade
Ductile Iron / Grey Iron



FRAME CASTING



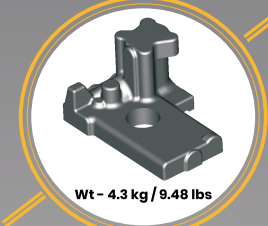
HOUSING



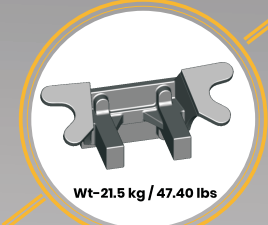
DIFF CASE



BODY REAR SECTION



BRACKET



PLAIN HALF



Melting

1 Unit 500 kg Tri track Medium Frequency Induction Furnace

1 Unit 1000 Kg Dual Track Medium Frequency Induction Furnace

1 Unit 1500 Kg Dual Track Medium Frequency Induction Furnace



Sand Plant

Fully Automated Sand Plant from DISA

Green Sand Multi Controllers

Sand Coolers from DISA



Core Making

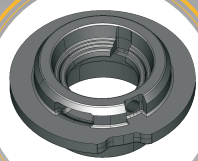
Multitude of CO₂ Core,
Shell & Cold Box Core Machines

ADJUSTER RING



Wt-0.5 kg / 11.02 lbs

CAGE PINION



Wt-8.0 kg / 17.64 lbs

CAGE THRU SHAFT



Wt-2.7kg / 5.95 lbs



RDSO INSERT



Wt-1.48 kg / 3.26 lbs

CONTROL ARM UPPER



Wt-49.0 kg / 108.04 lbs

BEV



Wt-3.6 kg / 7.93 lbs

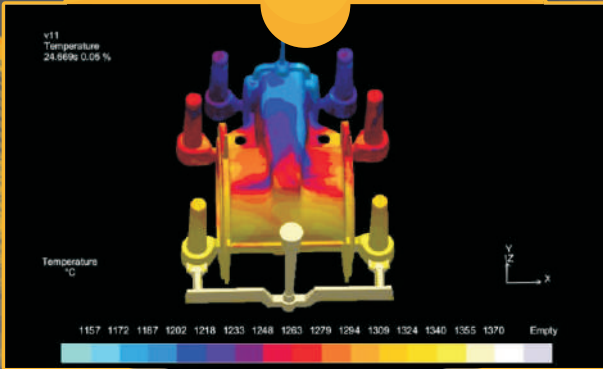
New Product Development

CAD/CAM Design Work Stations

Pattern machining centers

MAGMA simulation software

RPT (Rapid Prototyping Machine)
for extremely short lead times



Laboratory

Spectrometers

UTMs & Microscopes

Tensometers

General Sandtesting Equipments

Material Testing Equipments



Machining Division

CNCs,VMCs,HMCs & VTLs

Honing & Broaching Machines

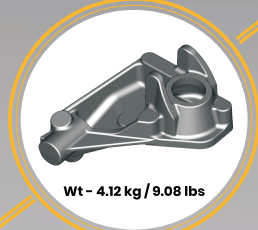
Induction Hardening Machines

Grinding Machines and SPMs

SEAT SPRING CASTING



BRACKET CAST



AXLE HOUSING



DN 250 BODY



PLAIN HALF



PLAIN HALF



OUR PROUD CUSTOMERS



OUR MANUFACTURING UNITS

Jothi Malleables Private Limited, our parent company established in 1973, specializes in production and machining of light-medium weight castings and is equipped with a capacity of 24,000 TPA.

Jothi Micro Cast Private Limited, our group company established in 1984, specializes in heavy-weight casting manufacturing and has a production capacity of 12,000 TPA.

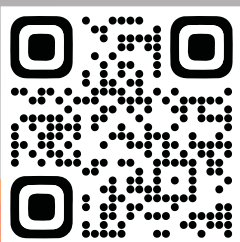
Corporate Office

Jothi Group

B - 22, Shastri Road, Thillai Nagar,
Trichy - 620 018, Tamil Nadu - India.

<https://www.jothigroup.com>

Mail: mktg@jmplgroups.com & marketing@jmplgroups.com



OUR PRODUCTS



Factory Unit - I

Jothi Malleables Private Limited

D-17&18 Developed Industrial Estate,
Thuvakudi, Trichy - 620 015,
Tamil Nadu, India.



www.jothigroup.com

Mail: mktg@jmplgroups.com & marketing@jmplgroups.com

OUR PRODUCTS



Factory Unit - II

Jothi Micro Cast Pvt. Ltd.

NH 45 Trichy - Dindugal Highway,
Muthupudaiyanpatti Post,

Manapparai - 621312, Tamil Nadu, India.



 YouTube

Mail: mktg@jmplgroups.com & marketing@jmplgroups.com