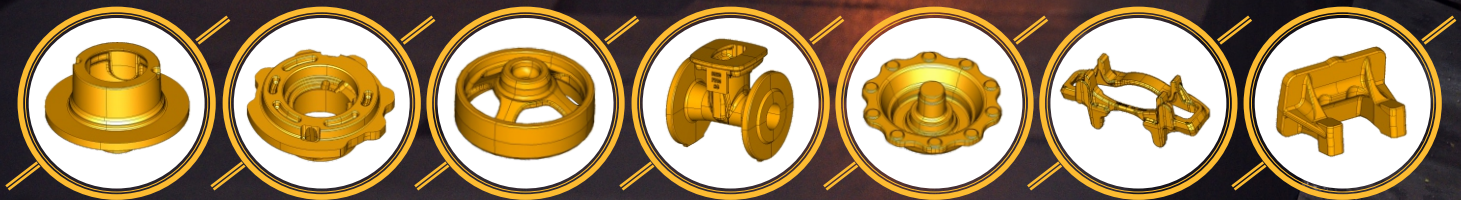




JOTHI GROUP

Making Commitments Work



Jothi Group

Jothi group is a foundry and machining group with over 50+ years of experience in the production of Ductile and Grey iron castings, specialising in safety critical castings with unmatched quality, precision and expertise. Being a renowned casting manufacturer in the Automotive, Pumps, Valves, Railways, Defence, and Tractor segments, Jothi Group boasts a production capacity of 36,000 TPA.

Vision: "To emerge as the unparalleled global leader in the Ferrous Casting industry and remain the ultimate choice of customers."

JOTHI GROUP MAJOR MILESTONES

1973

Incorporation – Parent Company
Jothi Malleables Private Limited (Unit I)
with DISA ARPA 300 line

1984

Incorporation – Subsidiary
Jothi Micro Cast Private Limited (Unit II)
with DISA ARPA 300 line

1995

Forward integration: Started our machining
division with CNC Turning Centers

1996

Expansion – Installed WBQ3 line with
capacity of 3000 TPA in Unit I

2003

Improvement & Expansion –
DISA – Sand Plant & DISA MATCH 130 moulding
machine 8000 TPA installed in Unit I

2004

Improvement – Emission control
equipment from DISA with a max
emission level of 20mg/Nm³

2006

Expansion – Introduced additional
CNCs and VMCs in machine shop

Upgradation – Disamatic Vertical Line
(DISA C3) 16000 TPA installed in Unit I

2011

Improvement – MAGMA Simulation Software
introduced

2015

Upgradation – DISA ARPA 900 Line-I,
installed in Unit II | 9000 TPA

2018

Improvement – Process driven fettling line
to reduce process time to 16 hours

2020

Improvement – Cold Box cores Introduced
with maximum core weight of 100kgs

2022

Expansion – Installed DISA ARPA 900
Line-II 9000 TPA in Unit II

2023

Sustainability Initiative – Capitalized
and Installed Solar Power for 12MW

2024

2025

Expansion : DISA MATCH 130 – 8000 TPA / SHELL CORE capacity increased to Produce up to 25kg cores

Certifications



DISAMATIC C3 – Fully Automatic VERTICAL 1 Line – Flaskless High-Pressure Moulding

Mould Size

650mm x 535mm x 120/340 mm

Moulding Speed

250 Moulds / Hour

Weight Range

0.5 Kgs to 30 Kgs

Capacity

16000 MT / Annum

Grade

Ductile Iron / Grey Iron



DISA MATCH 130 – Fully Automatic HORIZONTAL 2 Lines – Flaskless High-Pressure Moulding

Mould Size

508mm x 610mm x 300/400mm

Moulding Speed

160 Moulds / Hour

Weight Range

0.5kg to 50kgs

Capacity

16000 MT / Annum

Grade

Ductile Iron / Grey Iron



Arpa 900 – Jolt and Squeeze Moulding with Flask 2 Lines

Mould Size

1 - 970mm x 740mm x 600mm

2 - 970mm x 910mm x 600mm

Moulding Speed

40 Moulds / Hour

Weight Range

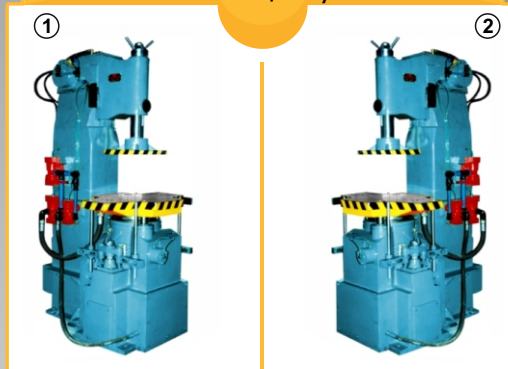
20 to 200 Kg

Capacity

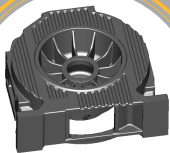
18000 MT - Annum

Grade

Ductile Iron / Grey Iron

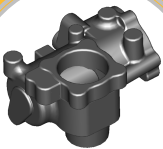


FRAME CASTING



Wt-99.0kg / 218.29 lbs

HOUSING



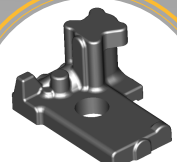
Wt-10.2kg / 22.49 lbs

DIFF CASE



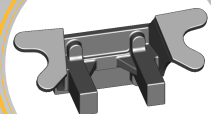
Wt-15.6 kg / 34.39 lbs

BODY REAR SECTION



Wt - 4.3 kg / 9.48 lbs

BRACKET



Wt-21.5 kg / 47.40 lbs

PLAIN HALF



Wt-14.2 kg / 31.31 lbs

Melting

1 Unit 500 kg Mono Track

1 Unit 1000 kg Mono Track

2 Unit 1000 Kg Dual Track

2 Unit 1500 Kg Dual Track



Sand Plant

Fully Automated Sand
Plant from DISA

Green Sand Multi Controllers

Sand Coolers from DISA



Core Making

Multitude of CO² Core,
Shell & Cold Box Core Machines

Cold box core machines

Machine Capacity	No. of Machines
10kg Horizontal	2
20kg Vertical	6
30kg Horizontal	1
100kg Horizontal	2

Shell core machines

Machine Capacity	No. of Machines
5kg	5
25kg	1

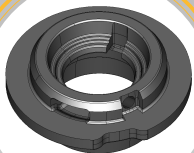


ADJUSTER RING



Wt-0.5 kg / 11.02 lbs

CAGE PINION



Wt-8.0 kg / 17.64 lbs

CAGE THRU SHAFT



Wt-2.7kg / 5.95 lbs

RDSO INSERT



Wt-1.48 kg / 3.26 lbs

CONTROL ARM UPPER



Wt-49.0 kg / 108.04 lbs

BEV



Wt-3.6 kg / 7.93 lbs

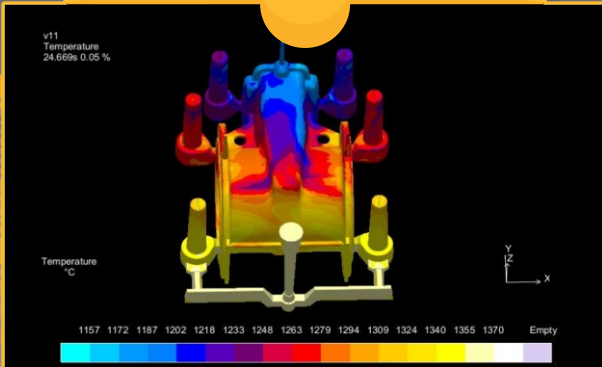
New Product Development

CAD/CAM Design Work Stations

Pattern machining centers

MAGMA simulation software

RPT (Rapid Prototyping Machine)
for extremely short lead times



Laboratory

Spectrometers

UTMs & Microscopes

Tensometers

General Sandtesting Equipments

Material Testing Equipments



CMM Machine



Machining Division

CNCs, VMCs & VTLs

Honing & Broaching Machines

Induction Hardening Machines

Grinding Machines and SPMs

CMM Accuracy 0.003mm

Scanner Accuracy 0.020mm



Scan Machine

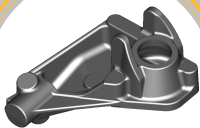


SEAT SPRING CASTING



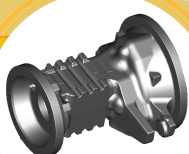
Wt - 20.3 kg / 49.17 lbs

BRACKET CAST



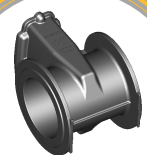
Wt - 4.12 kg / 9.08 lbs

AXLE HOUSING



Wt-73.0kg / 160.96 lbs

GATE VALVE BODY



Wt-57.0 kg / 125.68 lbs

KNIFE GATE VALVE



Wt-50kg / 110.231 lbs

PLAIN HALF



Wt-4.0 kg / 8.82 lbs

OUR PROUD CUSTOMERS



OUR MANUFACTURING UNITS

Jothi Malleables Private Limited, our parent company established in 1973, specializes in production and machining of light-medium weight castings and is equipped with a capacity of 32,000 TPA.

Jothi Micro Cast Private Limited, our group company established in 1984, specializes in heavy-weight casting manufacturing and has a production capacity of 18,000 TPA.

Corporate Office

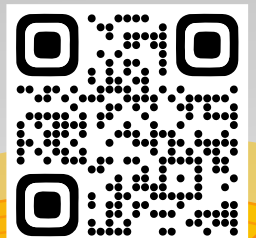
Jothi Group

📍 B - 22, Shastri Road, Thillai Nagar,
Trichy - 620 018, Tamil Nadu - India.

🌐 www.jothigroup.com

✉ mktg@jmplgroups.com & marketing@jmplgroups.com

Website



(Plant Video Available)